

SD-WAN 2019



Marie Skouenborg



What it includes

Application based routing

Multipath routing

Quality of Experience

Centralized orchestration

Visibility and Analytics

Automation

Encrypted tunneling

Access independent

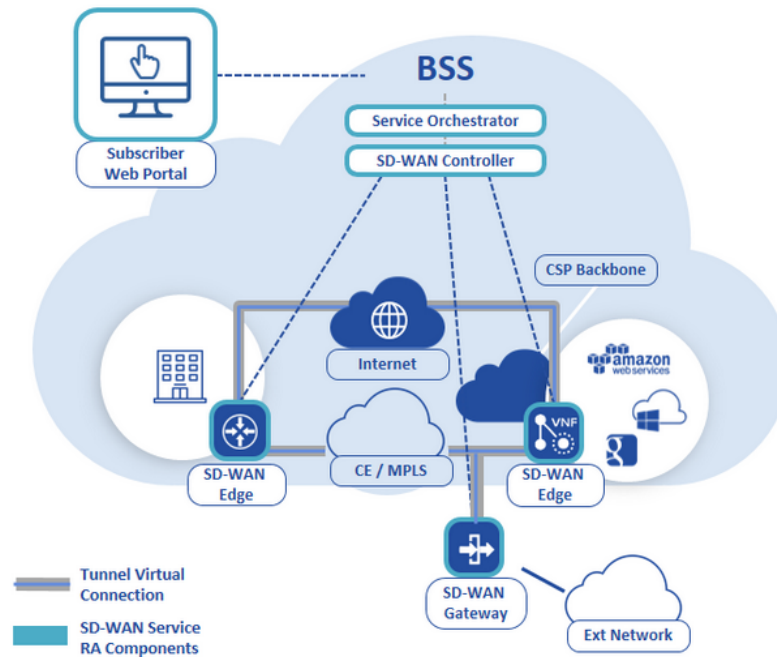
ZeroTouchDeployment

Security

Reduce # HW on site

Cloud integration

SD-WAN Service Components



SD-WAN Edge

Physical or virtual

SD-WAN Gateway

Between SD-WAN and external connectivity services

SD-WAN Controller

Centralized management of SD-WAN edges & gateways

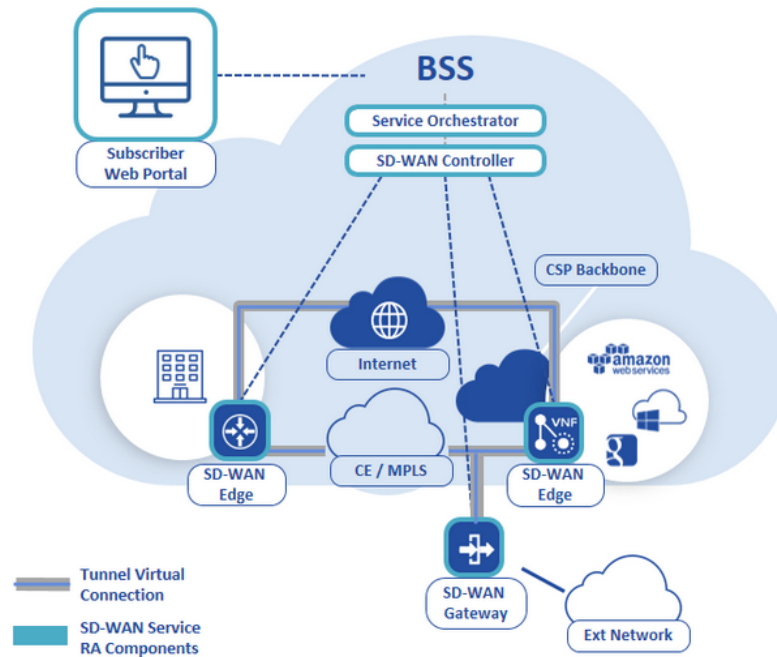
Service Orchestrator

Lifecycle Service Orchestration of SD-WAN and other services

Subscriber Web Portal

Subscriber service ordering and modification

SD-WAN Service Components



SD-WAN Edge

Physical or virtual

SD-WAN Gateway

Between SD-WAN and external connectivity services

SD-WAN Controller

Centralized management of SD-WAN edges & gateways

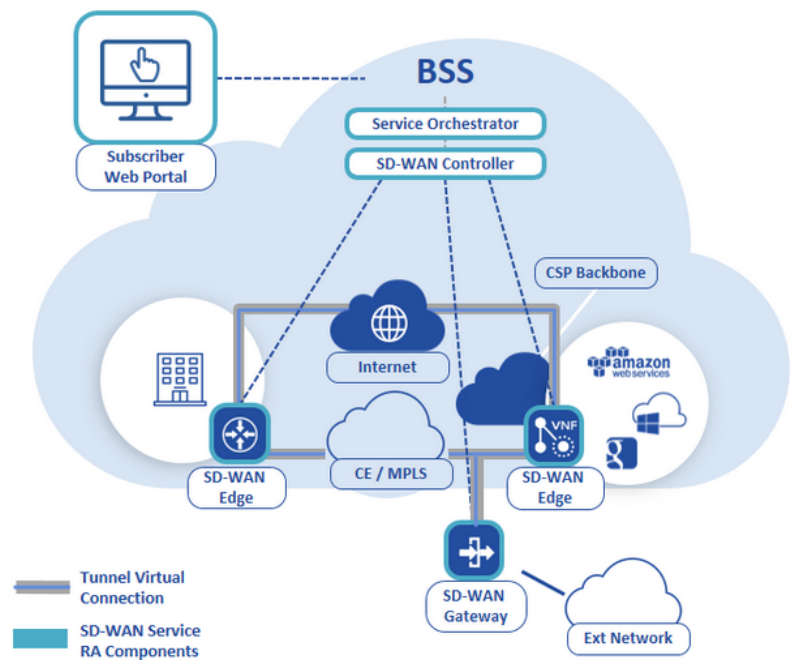
Service Orchestrator

Lifecycle Service Orchestration of SD-WAN and other services

Subscriber Web Portal

Subscriber service ordering and modification

SD-WAN Service Components



SD-WAN Edge

Physical or virtual

SD-WAN Gateway

Between SD-WAN and external connectivity services

SD-WAN Controller

Centralized management of SD-WAN edges & gateways

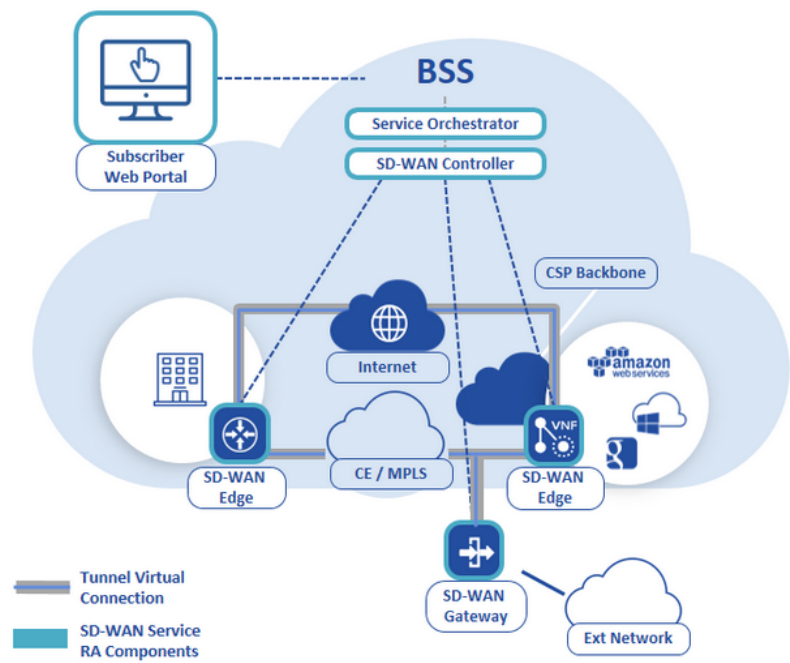
Service Orchestrator

Lifecycle Service Orchestration of SD-WAN and other services

Subscriber Web Portal

Subscriber service ordering and modification

SD-WAN Service Components



SD-WAN Edge

Physical or virtual

SD-WAN Gateway

Between SD-WAN and external connectivity services

SD-WAN Controller

Centralized management of SD-WAN edges & gateways

Service Orchestrator

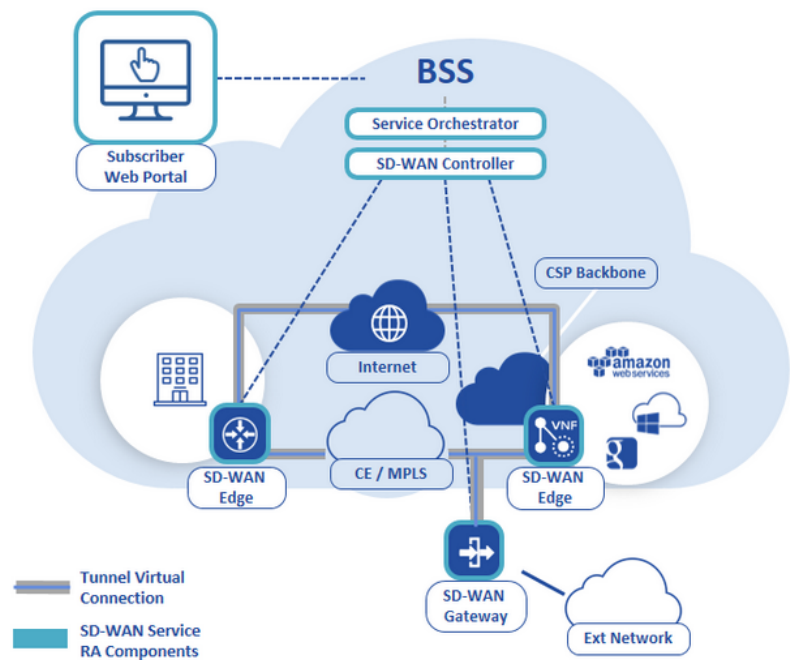
Lifecycle Service Orchestration of SD-WAN and other services

Subscriber Web Portal

Subscriber service ordering and modification



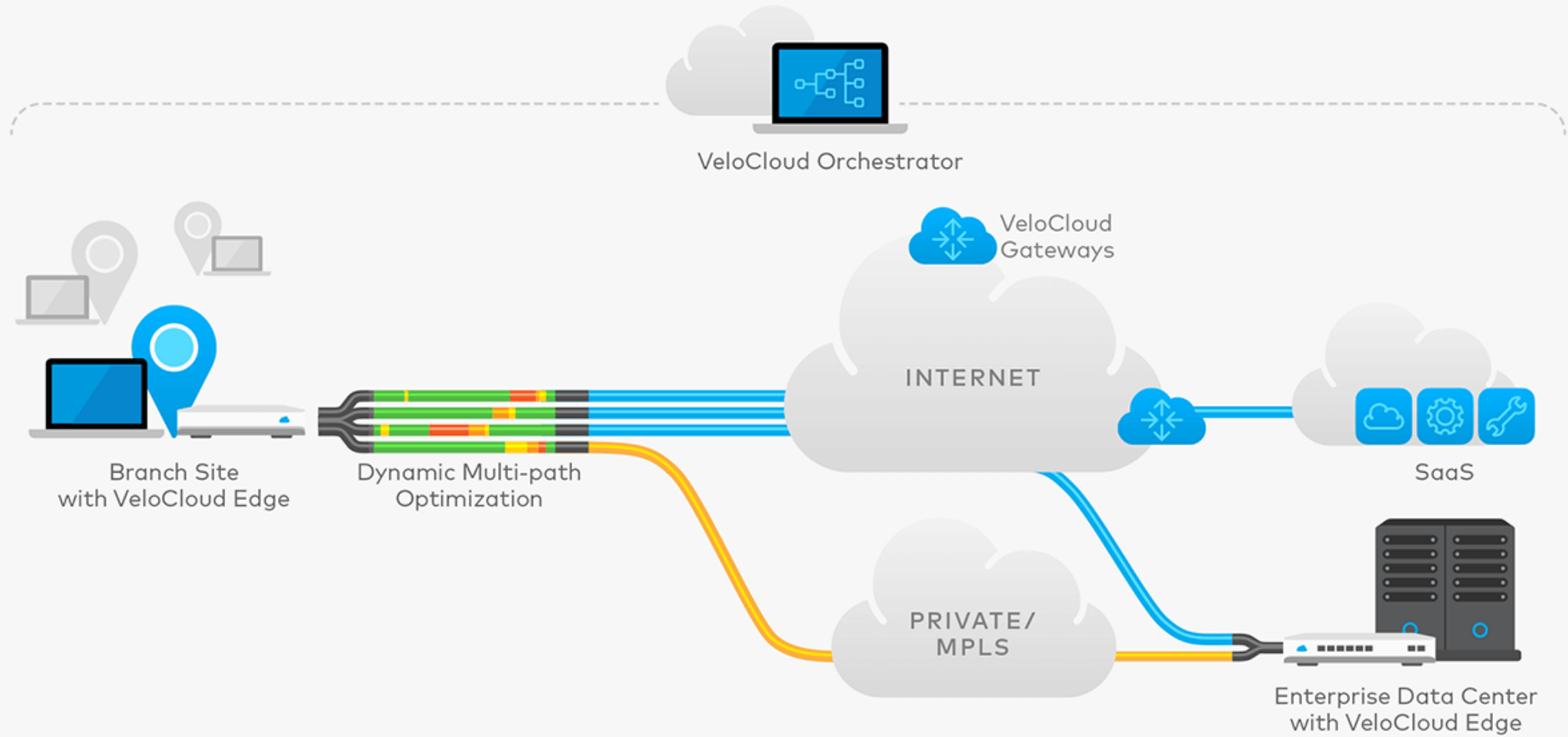
SD-WAN Service Components



- SD-WAN Edge**
Physical or virtual
- SD-WAN Gateway**
Between SD-WAN and external connectivity services
- SD-WAN Controller**
Centralized management of SD-WAN edges & gateways
- Service Orchestrator**
Lifecycle Service Orchestration of SD-WAN and other services
- Subscriber Web Portal**
Subscriber service ordering and modification

+ Underlay

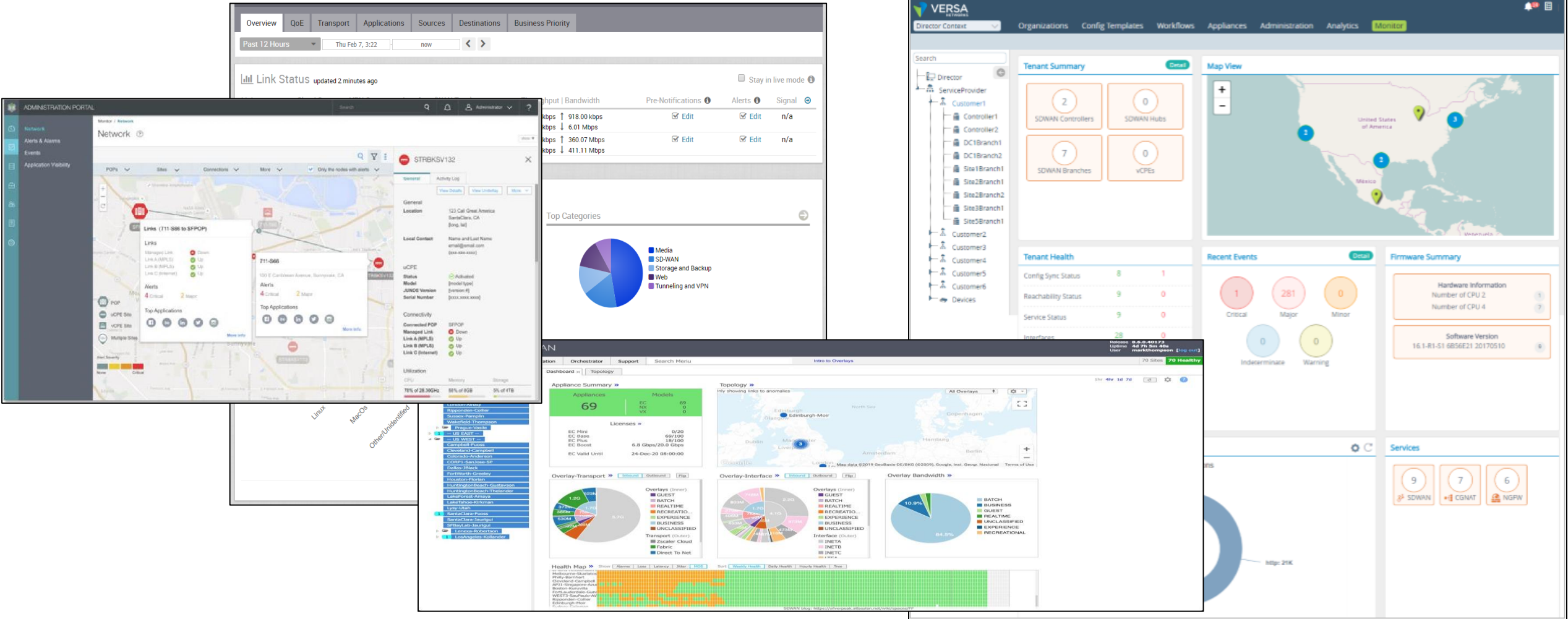
Application Based Routing and QoExperience



Application Based Routing and QoExperience



... and then add a pinch of portal and telemetry





What to consider

Not all Software Defined

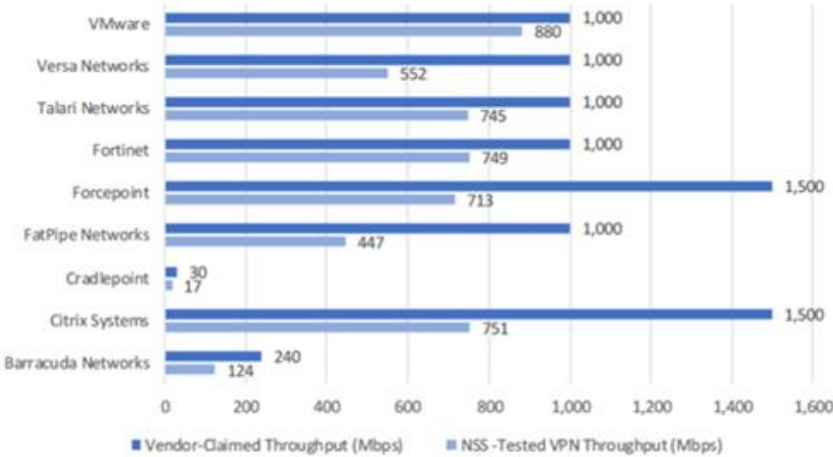
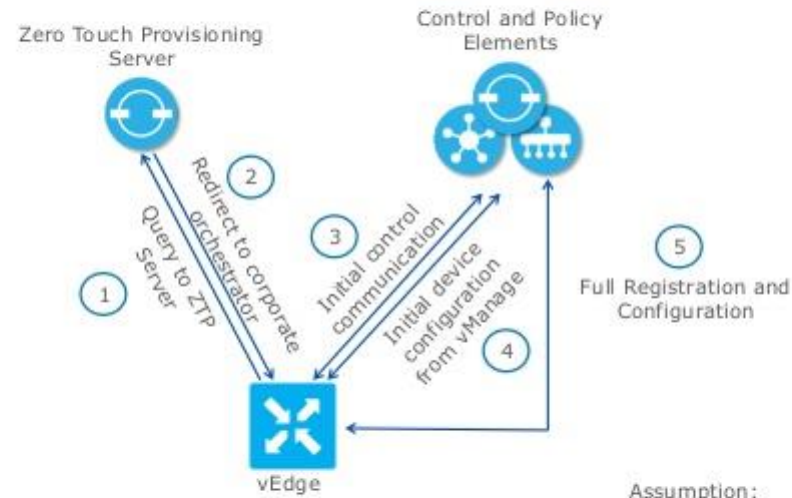


Figure 2 – Vendor-Claimed Throughput vs. NSS-Tested Throughput (Mbps)



Zero Touch Provisioning vEdge Walk-through



Assumption:

- DHCP on Transport Side (WAN)
- DNS to resolve ZTP server name*

* Factory default configured

<https://www.sdxcentral.com/>

<https://www.mef.net/mef-3-0-sd-wan>